

CONSTRUCTION NOTES:

- ① 3-INCH SENSUS OMNI C2 AMI METER WITH STRAINER AND M520M TRANSCEIVER UNIT. SENSUS PART #: C31SXXXF1AA0X
- ② 4-INCH SENSUS OMNI C2 AMI METER WITH STRAINER AND M520M TRANSCEIVER UNIT. SENSUS PART #: C41SXXXF1AA0X
- ③ 3-INCH OR 4-INCH FLANGED COUPLING ADAPTER, MIN. 150 PSI RATING (SMITH-BLAIR OAE)
- ④ 3-INCH OR 4-INCH FLANGED X PLAIN END DUCTILE IRON SPOOL (CL350)
- ⑤ 3-INCH OR 4-INCH FLANGED DUCTILE IRON SPOOL (CL350)
- ⑥ 3-INCH OR 4-INCH RESILIENT WEDGE (R.W.) GATE VALVE, MIN. 150 PSI RATING (MUELLER OAE)
- ⑦ 3-INCH OR 4-INCH R.W. GATE VALVE WITH VALVE BOX ASSEMBLY PER ALW STD W-10, MIN. 150 PSI RATING (MUELLER OAE)
- ⑧ PIPE SUPPORT PER ALW STD W-8
- ⑨ 2-INCH DOUBLE STRAP BRASS SADDLE (F.I.P.T. OUTLET), BALL VALVE (M.I.P.T. X M.I.P.T.), AND CAP (MUELLER OAE)
- ⑩ 4-FT X 5-FT (I.D.) PRECAST CONCRETE VAULT, OPEN BOTTOM, SPRING ASSISTED TRAFFIC LID (J&R CONCRETE PRODUCTS OAE)
- ⑪ GALVANIZED LADDER, WALL MOUNTED (INWESCO OAE)
- ⑫ 2-INCH DOUBLE STRAP BRASS SADDLE, F.I.P.T. OUTLET (MUELLER OAE)
- ⑬ 2-INCH BALL VALVE WITH LOCKWING, M.I.P.T. INLET X PACK JOINT OUTLET, THREE (3) REQUIRED (MUELLER OAE)
- ⑭ 2-INCH 90° BEND, PACK JOINT X PACK JOINT (MUELLER OAE)
- ⑮ 2-INCH COPPER SERVICE TUBING, TYPE "K" - SOFT - REQUIRED TO USE A COPPER SIZER / REROUNDING TOOL PRIOR TO CONNECTING FITTINGS TO THE COPPER TUBING.
- ⑯ UNISTRUT CLAMPS ATTACHED TO VAULT WALL WITH INSULATING TAPE BETWEEN THE COPPER TUBING AND THE UNISTRUT CLAMPS.

WATER STANDARD



DRAWN: A. TOHMEH

DATE: 02-27-2020

SCALE: NTS

3" & 4" METER WITH 2" BY-PASS

APPROVED:

SENIOR WATER SYSTEM ENGINEER

76544

RCE NO.

02/27/2020

DATE

DWG. NO.

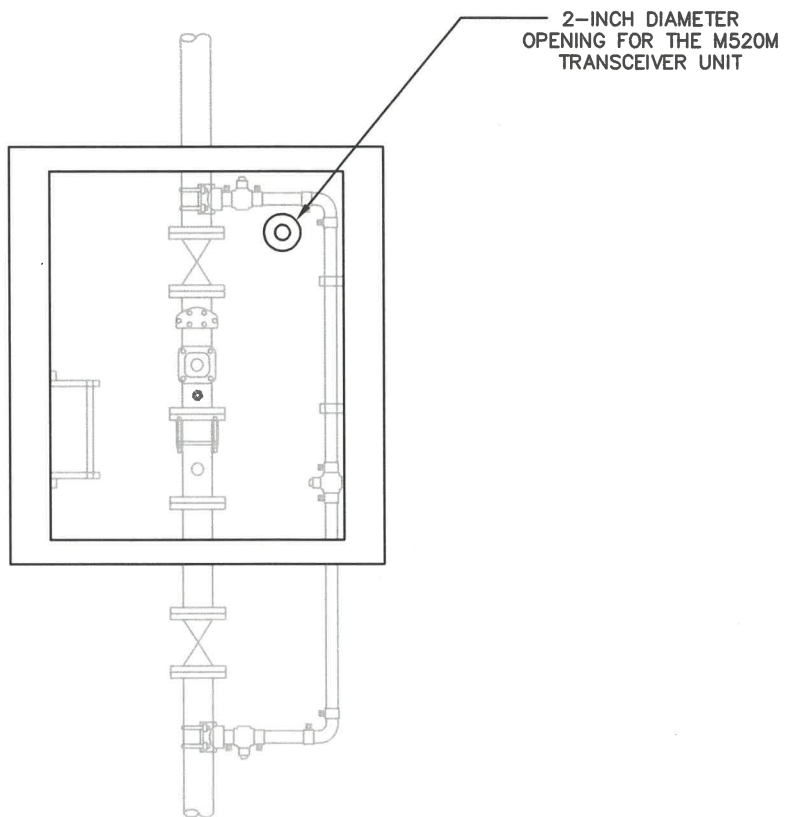
W - 3

SHEET
1 OF 2

- ALL WORK PERFORMED SHALL BE INSPECTED BY THE ALW WATER DIVISION INSPECTOR.
- ANY CHANGES TO THIS STANDARD MUST BE APPROVED BY THE ALW WATER DIVISION ENGINEER.
- PRIOR TO ORDERING MATERIALS, SUBMITTALS SHALL BE PROVIDED TO ALW FOR ALL MATERIALS FOR REVIEW AND APPROVAL BY ALW.
- ALL PIPE SHALL BE DUCTILE IRON CLASS 350 PIPE.
- ALL HARDWARE AND BOLTS SHALL BE TYPE 316 STAINLESS STEEL.
- PLACE AN APPROVED FLEXIBLE PACKING AROUND PIPE PENETRATIONS.
- THE WATER METER SHALL HAVE A MINIMUM OF 12-INCH CLEARANCE ON ALL SIDES.

UNLESS OTHERWISE SPECIFIED ON PLANS OR CALLED FOR IN THE SPECIFICATIONS:

1. ALL VAULTS SHALL BE OPEN BOTTOM AND PLACED ON 18 INCHES OF COMPACTED 3/4-INCH ROCK.
2. THE HATCH SHALL BE A U.S.F. FABRICATION, INC. (OAE) SPRING ASSISTED, DOUBLE-LEAF ALUMINUM HATCH AND SHALL BE DESIGNED FOR H-20 PARKING LOT / OCCASIONAL TRAFFIC (MAXIMUM 15 M.P.H., LOAD LEVEL 5 / LOAD LEVEL 4). A 2-INCH DIAMETER OPENING SHALL BE MADE AT THE CORNER OF THE HATCH ON THE BYPASS SIDE OF THE VAULT FOR THE M520M TRANSCEIVER UNIT.



WATER STANDARD



DRAWN: A. TOHMEH

DATE: 02-27-2020

SCALE: NTS

3" & 4" METER WITH 2" BY-PASS

APPROVED:

SENIOR WATER SYSTEM ENGINEER

76544

RCE NO.

02/27/2020

DATE

DWG. NO.

W - 3

SHEET

2 OF 2