

LODI ENERGY CENTER
Project Term Sheet
2-6-08

Project Name: Lodi Energy Center (LEC)

Description: 255 MW base load Combined Cycle Natural Gas Fired Combustion Turbine Generating Station (one gas turbine and one steam turbine) with approximately 25 MW of peaking duct firing.

Location: Lodi, California, southwest of the intersection of Interstate 5 and Highway 12, adjacent to NCPA's existing CT2 project and the City of Lodi's White Slough Water Treatment Plant (see attached map).

Project Manager Ed Warner, Northern California Power Agency, (209)728-1387 X-22

Performance: LEC is expected to have a heat rate of approximately 7050 Btu per kWh of energy production and operate at about an 80% annual capacity factor resulting in expected annual energy production of 1,787,00 MWh and the consumption about 12,500,000 MMBtu of natural gas.

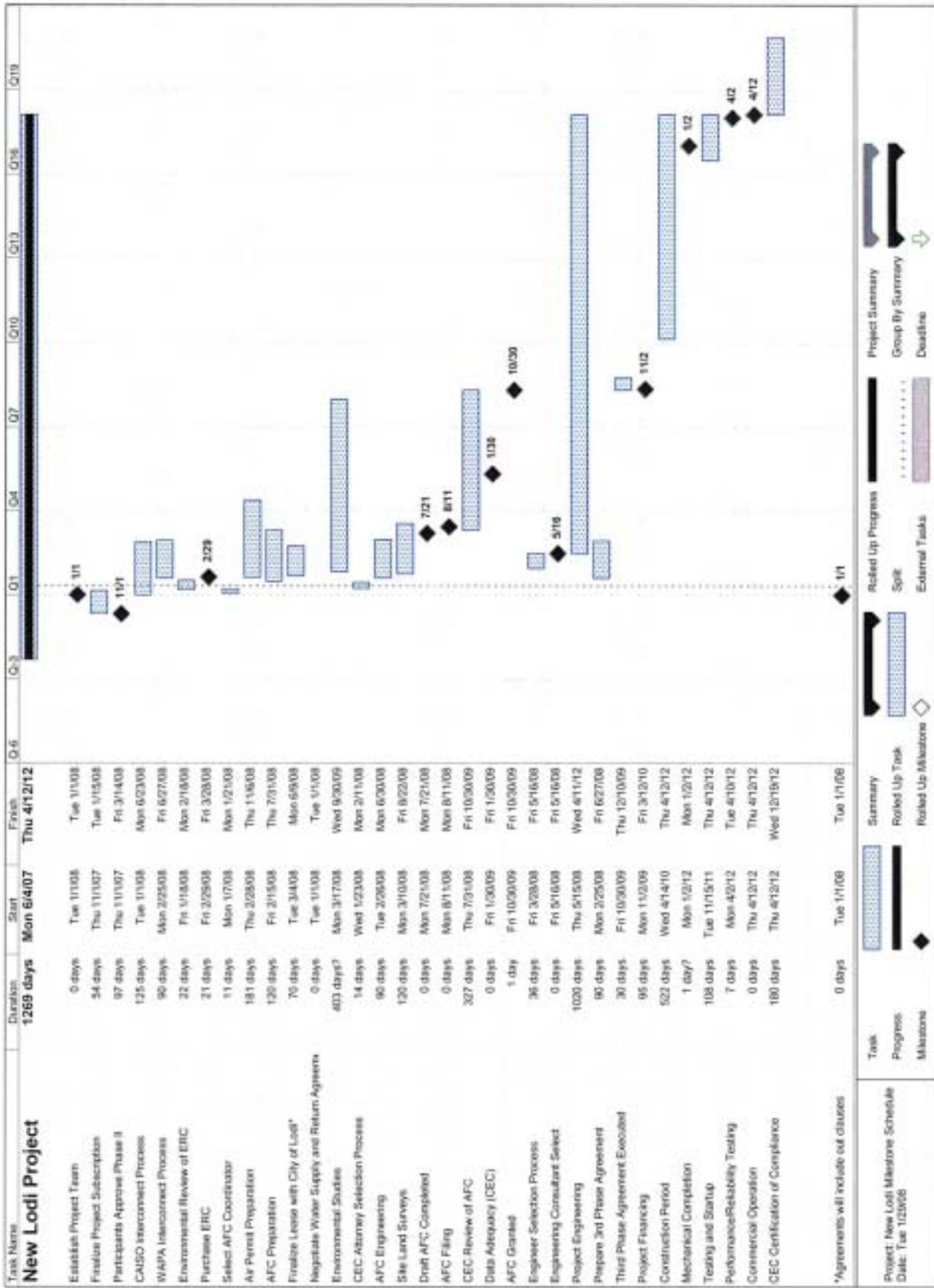
Cost Estimate: Total development and construction cost is anticipated to be approximately \$275 million or about \$1,080 / kW of project capacity. Utilizing a natural gas price of \$7.00 / MMBtu and an 80% annual plant capacity factor results in a projected "all-in" energy cost of just under \$70 / MWh.

Transmission: Either PG&E/CAISO 230kv or Western 230kv line.

Status: Project participants are attaining approvals for participation in Phase 2 activities which include the acquisition of needed emissions credits, initiating the CEC application process, and commencing detailed engineering and design, all as a prelude to issuing final bid documents, likely toward the end of 2009. (see attached project Phase 2 Timeline)

Commercial Operation Date: April 2012

Participants: Azusa (7MW, 2.745%); BART (15MW, 5.882%); Biggs (1MW, 0.392%); CDWR (60MW, 23.529%); Gridley (5MW, 1.961%); Healdsburg (4MW, 1.569%); Lodi (30MW, 11.765%); Lompoc (5MW, 1.961%); Modesto (60MW, 23.529%); Plumas-Sierra (2MW, 0.784%); Port of Oakland (3MW, 1.176%); PWRPA (5MW, 1.961%); Silicon Valley Power (50MW, 19.608%); Ukiah (8MW, 3.137%)



Project Location

